



India Meteorological Department
(Ministry of Earth Sciences)

BULLETIN NO. 17 (BoB/02/2023)

TIME OF ISSUE: 1130 HOURS IST DATED: 12.05.2023
FROM: INDIA METEOROLOGICAL DEPARTMENT (FAX NO. 24643965/24699216/24623220)

TO: CONTROL ROOM, NDM, MINISTRY OF HOME AFFAIRS (FAX.NO. 23093750)
CONTROL ROOM NDMA (FAX.NO. 26701729)
CABINET SECRETARIAT (FAX.NO.23012284, 23018638)
PS TO HON'BLE MINISTER FOR S & T AND EARTH SCIENCES (FAX NO.23316745)
SECRETARY, MOES (FAX NO. 24629777)
H.Q. (INTEGRATED DEFENCE STAFF AND CDS) (FAX NO. 23005137/23005147)
DIRECTOR GENERAL, DOORDARSHAN (23385843)
DIRECTOR GENERAL, AIR (23421105, 23421219)
PIB MOES (FAX NO. 23389042)
UNI (FAX NO. 23355841)
D.G. NATIONAL DISASTER RESPONSE FORCE (NDRF) (FAX NO. 26105912, 2436 3260)
DIRECTOR, PUNCTUALITY, INDIAN RAILWAYS (FAX NO. 23388503)
CHIEF SECRETARY, ANDAMAN & NICOBAR ISLANDS (FAX NO. 03192- 232656)
CHIEF SECRETARY, GOVT. WEST BENGAL (FAX NO. 033-22144328)
CHIEF SECRETARY, GOVT. OF ODISHA (FAX NO. 0674 -2536660)
CHIEF SECRETARY, GOVT. OF ANDHRA PRADESH (FAX NO. 0863-2441029, 08645-246600)
CHIEF SECRETARY, GOVT. OF TAMIL NADU (FAX NO. 044-25672304)
CHIEF SECRETARY, GOVT. OF PUDUCHERRY (FAX NO. 0413-2337575, 2334145)
CHIEF SECRETARY, GOVT. OF TRIPURA (FAX NO. 0381-2414013, 2413200)
CHIEF SECRETARY, GOVT. OF MIZORAM (FAX NO. 0389-2322745, 2320588)
CHIEF SECRETARY, GOVT. OF ASSAM (FAX NO. 0361-2260900)
CHIEF SECRETARY, GOVT. OF MANIPUR (FAX NO. 0385-2452629)
CHIEF SECRETARY, GOVT. OF NAGALAND (FAX NO. 0370-2270057)

Sub: Very Severe Cyclonic storm "Mocha" (pronounced as "Mokha") over Central and adjoining Southeast Bay of Bengal

The **Very Severe Cyclonic Storm "Mocha"** (pronounced as "**Mokha**") over Central and adjoining Southeast Bay of Bengal moved nearly northwards with a speed of 13 kmph during past 06 hours and lay centered at 0830 hours IST of today, the 12th May 2023 over the same region near latitude 13.6°N and longitude 88.2°E, about 530 km west-northwest of Port Blair, 950 km south-southwest of Cox's Bazar (Bangladesh) and 870 km south-southwest of Sittwe (Myanmar).

It is very likely to move north-northeastwards and intensify further over Eastcentral Bay of Bengal. It is very likely to cross southeast Bangladesh and north Myanmar coasts between Cox's Bazar (Bangladesh) and Kyaukpyu (Myanmar), close to Sittwe (Myanmar) around noon of 14th May, 2023 as a **Very Severe Cyclonic Storm with maximum sustained wind speed of 150-160 kmph gusting to 175 kmph.**

Forecast track and intensity are given below:

Date/Time (IST)	Position (Lat. °N/ long. °E)	Maximum sustained surface wind speed (Kmph)	Category of cyclonic disturbance
12.05.23/0830	13.6/88.2	120-130 gusting to 145	Very Severe Cyclonic Storm
12.05.23/1130	13.9/88.3	125-135 gusting to 150	Very Severe Cyclonic Storm
12.05.23/1730	14.5/88.6	135-145 gusting to 160	Very Severe Cyclonic Storm
12.05.23/2330	15.2/89.0	140-150 gusting to 165	Very Severe Cyclonic Storm
13.05.23/0530	15.9/89.4	145-155 gusting to 170	Very Severe Cyclonic Storm
13.05.23/1730	17.5/90.5	150-160 gusting to 175	Very Severe Cyclonic Storm
14.05.23/0530	19.1/91.9	150-160 gusting to 175	Very Severe Cyclonic Storm
14.05.23/1730	21.4/93.8	100-110 gusting to 120	Severe Cyclonic Storm
15.05.23/0530	23.5/95.5	40-50 gusting to 60	Depression

Warnings:

(i) Rainfall (warning graphics enclosed)

- ❖ **Andaman & Nicobar Islands:** Rainfall at most places with Heavy to very heavy rainfall at isolated places is likely on 12th May.
- ❖ **Tripura & Mizoram:** Rainfall at most places with Heavy rainfall at isolated places is likely on 13th May and heavy to very heavy rainfall at isolated places on 14th May.
- ❖ **Nagaland, Manipur & south Assam:** Rainfall at many places with Heavy rainfall at isolated places is on 14th May.

(ii) Wind warning:

- ❖ **Andaman Islands:**
Squally wind speed reaching 50-60 kmph gusting to 70 kmph is likely to prevail on 12th May.
- ❖ **Tripura, Mizoram & south Manipur:**
Squally wind speed reaching 50-60 kmph gusting to 70 kmph is very likely to prevail on 14th May.
- ❖ **North Andaman Sea:**
Squally wind speed reaching 50-60 kmph gusting to 70 kmph is likely to prevail over North Andaman Sea on 12th May and 45-55 kmph gusting 55 kmph on 13th May.
- ❖ **Southeast Bay of Bengal:**
Gale wind speed reaching 115-125 kmph gusting to 145 kmph is prevailing and likely to continue till evening and decrease thereafter becoming squally wind speed reaching 55-65 kmph gusting to 75 kmph on 13th May.
- ❖ **Adjoining areas of southwest Bay of Bengal:**
Squally wind speed reaching 50-60 kmph gusting to 70 kmph is likely to prevail till 13th May morning.
- ❖ **Eastcentral Bay of Bengal:**
Gale wind speed reaching 120-130 kmph gusting to 145 kmph is prevailing over the region. It is very likely to increase becoming Gale wind speed reaching 140-150 kmph gusting to 165 kmph from 12th May evening and increase further becoming 150-160 kmph gusting to 175 kmph till 13th May evening and gradually decrease thereafter.
- ❖ **Westcentral Bay of Bengal:**
Gale wind speed reaching 120-130 kmph gusting to 145 kmph is likely to prevail over southeastern sector of the region till 13th May morning. It will decrease gradually

becoming 90-100 kmph gusting to 110 kmph by 13th May evening and significantly decrease thereafter.

❖ **Northeast Bay of Bengal:**

Squally wind speed reaching 55-65 kmph gusting to 75 kmph is likely from evening of 12th May becoming 70-80 gusting to 90 kmph from 13th May morning and would gradually increase becoming 150-160 kmph gusting 175 kmph from 13th night till 14th May noon. It is likely to decrease rapidly after the land fall.

❖ **Adjoining areas of Northwest Bay of Bengal:**

Gale wind speed reaching 60-70 kmph gusting to 80 kmph is likely to prevail over southeast sector of the region and 45-55 kmph gusting to 65 kmph over the remaining areas of northwest Bay of Bengal from 13th May to 14th May forenoon and decrease gradually thereafter.

(iii) Sea condition

❖ **Andaman Sea:**

Very rough to rough over north Andaman Sea during 12th-13th May.

❖ **Southeast Bay of Bengal:**

Very high to phenomenal sea condition is likely to prevail on 12th May.

Very rough to rough on 13th May.

❖ **Eastcentral Bay of Bengal:**

Very High to phenomenal sea condition is prevailing and would continue to be phenomenal till 14th May morning. It will improve gradually thereafter.

❖ **Adjoining areas of Westcentral Bay of Bengal:**

Very high to phenomenal sea condition is prevailing and would continue to be phenomenal till 13th May morning. It will gradually improve thereafter.

❖ **Northeast Bay of Bengal:**

Rough to very rough on 12th May. It would become very rough to high till 13th May evening and very high to phenomenal till 14th May afternoon.

❖ **Adjoining areas of Northwest Bay of Bengal:**

Rough to very rough during 13th-14th May.

(iv) Fishermen Warning (warning graphics enclosed)

❖ Fishermen, ships, boats and trawlers are advised not to venture into southeast Bay of Bengal till 12th May, central Bay of Bengal and north Andaman Sea till 14th May and into northeast Bay of Bengal during 12th-14th May.

❖ Those over central & northeast Bay of Bengal and north Andaman Sea are advised to return to coast.

(v) Damage expected & Action suggested: Mizoram, Tripura, and South Manipur

❖ Minor Damage to loose/unsecured structures

❖ Some breaches in kutcha road due to heavy rain with the possibility of landslide, in vulnerable areas

❖ Uprooting of small trees and breaking of tree branches.

❖ Damage to small trees like Banana, Drum stick and Papaya etc.

❖ Damage to standing crops

Action Suggested

❖ Immediately harvest mature fruits and crops.

❖ Provide staking and cover to vegetables nurseries, fruit orchards.

❖ Avoid application of fertilizers and pesticides.

❖ Keep livestock inside sheds

(vi) Damage expected & Action suggested: Marine community (shipping, offshore industries, Tourism etc. over Bay of Bengal, Andaman Sea & Andaman & Nicobar Islands)

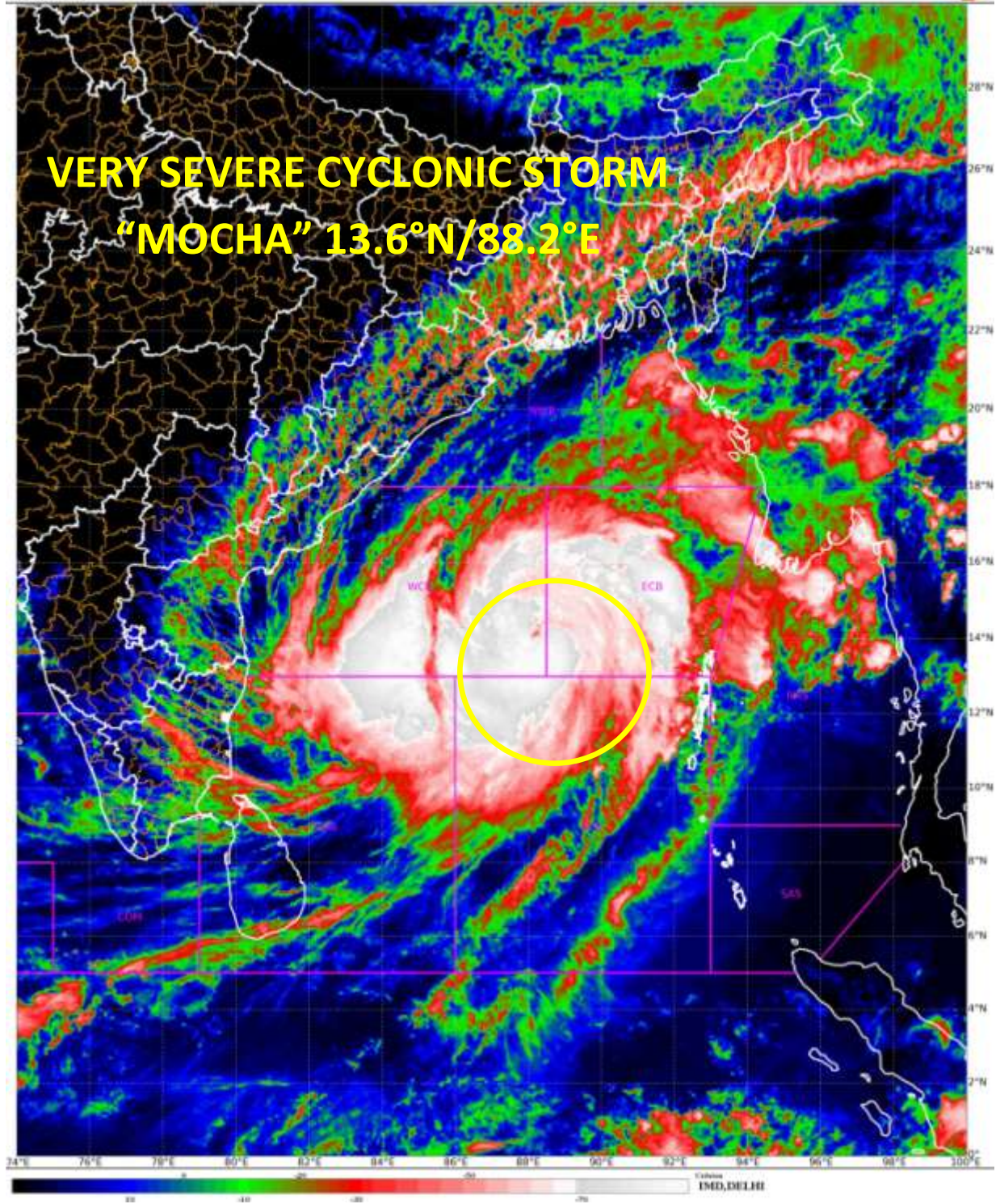
- ❖ Very rough to phenomenal sea could effect marine operation and offshore activities.
- ❖ Regulation of tourism and offshore activities and shipping near Andaman & Nicobar Islands till 13th May.
- ❖ Regulation of shipping activity over the sea areas of southeast Bay of Bengal and Andaman Sea till 12th May, eastcentral Bay of Bengal till 14th May, and westcentral Bay of Bengal till 13th May.
- ❖ Regulation of shipping activity over the sea areas of northeast Bay of Bengal during 12th-14th May.

The system is under continuous surveillance and the next message will be issued at 1430 hours IST of today, the 12th May 2023.

(Dr. Ananda Kumar Das)

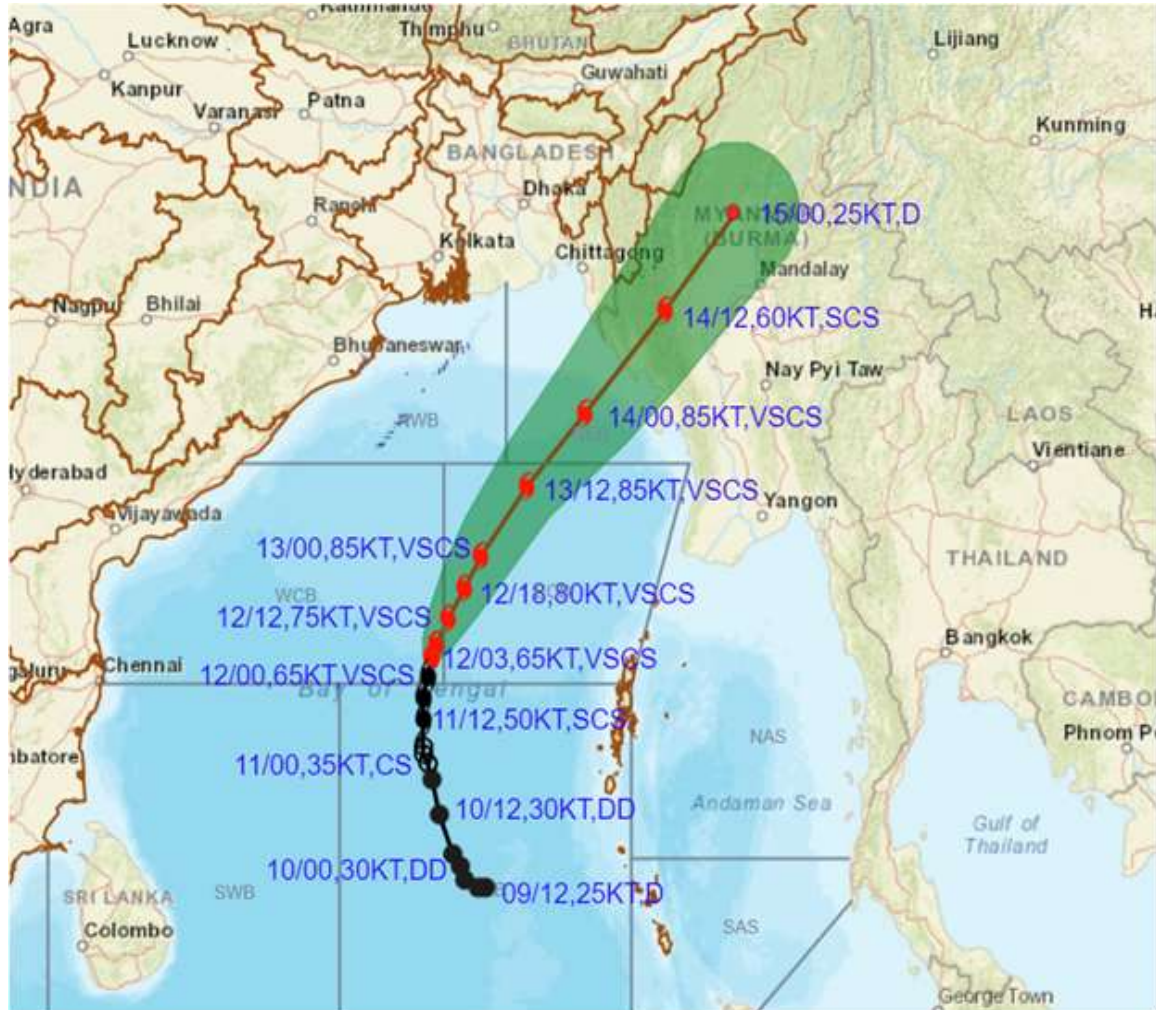
Scientist F, Cyclone Warning Division, New Delhi

Copy to: ACWC Kolkata/ ACWC Chennai/ CWC Bhubaneswar/CWCVisakhapatnam/MO Port Blair





OBSERVED AND FORECAST TRACK ALONGWITH CONE OF UNCERTAINTY OF VERY SEVERE CYCLONIC STORM MOCHA OVER CENTRAL AND ADJOINING SOUTHEAST BAY OF BENGAL BASED ON 0300 UTC (0830 IST) OF 12TH MAY 2023.



DATE/TIME IN UTC

IST=UTC + 0530

L: LOW PRESSURE AREA

WML: WELL MARKED LOW PRESSURE AREA

D: DEPRESSION (17-27 KT)

DD: DEEP DEPRESSION (28-33 KT)

CS: CYCLONIC STORM (34-47 KT)

SCS: SEVERE CYCLONIC STORM (48-63KT)

VSCS: VERY SEVERE CYCLONIC STORM (64-89 KT)

ESCS: EXTREMELY SEVERE CYCLONIC STORM (90-119 KT)

SuCS: SUPER CYCLONIC STORM (≥ 120 KT)

● LESS THAN 34 KT

○ 34.47 KT

○ ≥ 48 KT

— OBSERVED TRACK

— FORECAST TRACK

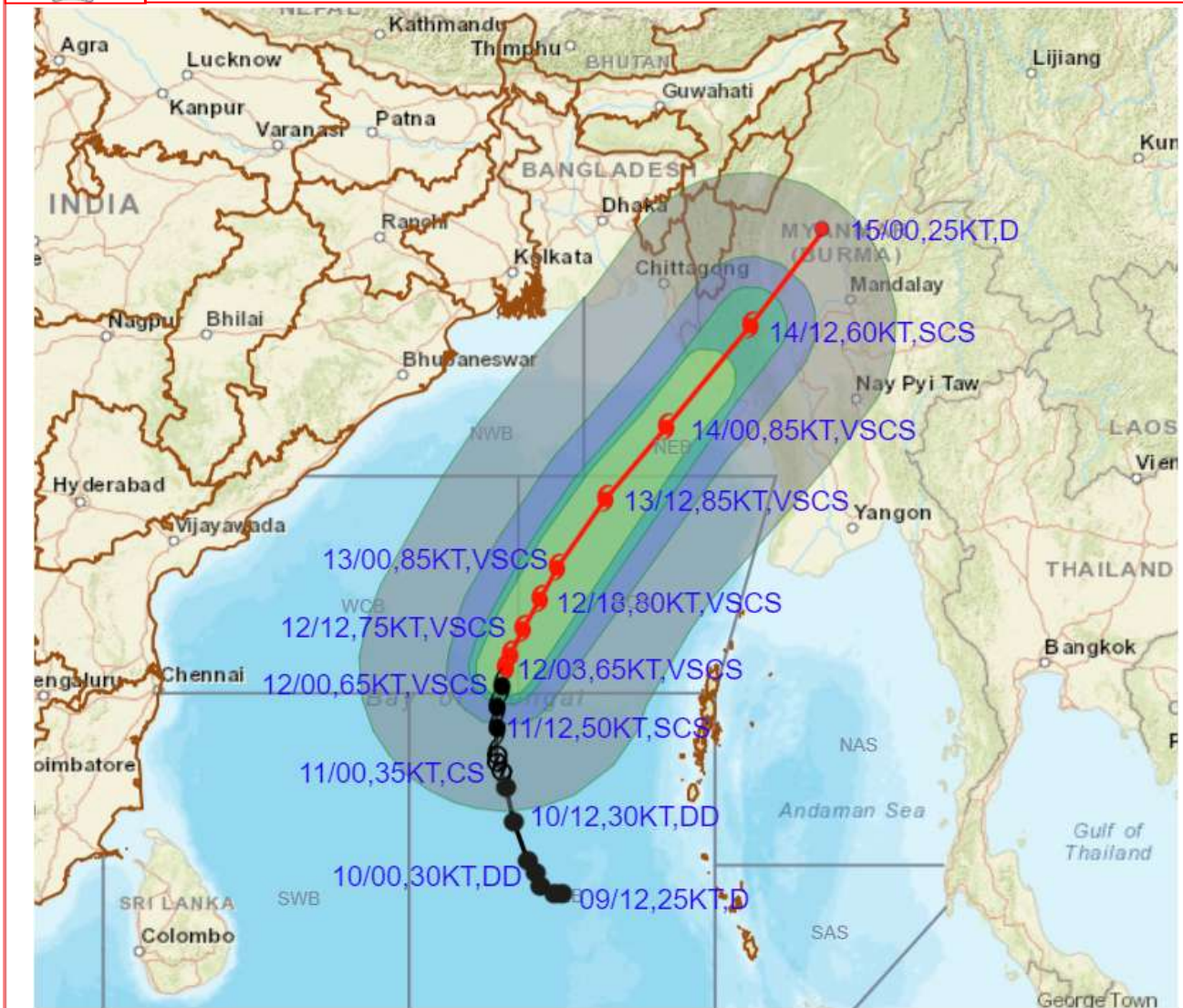
▲ CONE OF UNCERTAINTY

Forecast distance (km) and direction of the centre from nearest 5 coastal stations

Forecast Date and Time	Lead Period	Lat	Lon	Station 1	Station 2	Station 3	Station 4	Station 5
12.05.23/0300	0	13.6	88.2	MAYA BANDAR (517,W)	LONG ISLAND (530,WNW)	PORT BLAIR (536,WNW)	COCO ISLAND (561,W)	HUT BAY (580,NW)
13.05.23/0000	21	15.9	89.4	COCO ISLAND (470,WNW)	MAYA BANDAR (504,NW)	LONG ISLAND (544,NW)	SANDHEADS (564,SSE)	MANAUNG (565,SW)
14.05.23/0000	45	19.1	91.9	SITTWE (154,SW)	KYAUKPYU (177,W)	MANAUNG (195,W)	TEKNAF (201,SSW)	KYAUKTAW (209,SSW)
15.05.23/0000	69	23.5	95.5	PINLEBU (66,SSE)	SHWEBO (104,NNW)	MAWLAIK (112,E)	KATHA (113,SW)	KALEWA (127,ENE)



OBSERVED AND FORECAST TRACK ALONGWITH QUADRANT WIND DISTRIBUTION OF VERY SEVERE CYCLONIC STORM MOCHA OVER CENTRAL AND ADJOINING SOUTHEAST BAY OF BENGAL BASED ON 0300 UTC (0830 IST) OF 12TH MAY 2023.



DATE/TIME IN UTC
 IST=UTC + 0530
 L: LOW PRESSURE AREA
 WML: WELL MARKED LOW PRESSURE AREA
 D: DEPRESSION (17-27 KT)
 DD: DEEP DEPRESSION (28-33 KT)
 CS: CYCLONIC STORM (34-47 KT)
 SCS: SEVERE CYCLONIC STORM (48-63KT)
 VSCS: VERY SEVERE CYCLONIC STORM (64-89 KT)
 ESCS: EXTREMELY SEVERE CYCLONIC STORM (90-119 KT)
 SuCS: SUPER CYCLONIC STORM (\geq 120 KT)

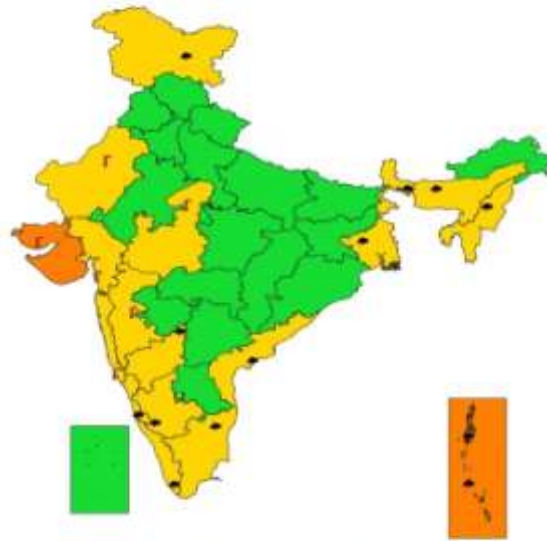
● LESS THAN 34 KT
 ○ 34-47 KT
 ● \geq 48 KT
 — OBSERVED TRACK
 — FORECAST TRACK
 — CONE OF UNCERTAINTY
 AREA OF MAXIMUM SUSTAINED WIND SPEED:
 ■ 28-33 KT (52-61 KMPH)
 ■ 34-49 KT (62-91 KMPH)
 ■ 50-63 KT (92-117 KMPH)
 ■ \geq 64 KT (\geq 118 KMPH)

IMPACT OVER THE SEA

MSW (knot/kmph)	Impact	Action
28-33 (52-61)	Very rough seas	Total suspension of fishing operations
34-49 (62-91)	High to very high seas	Total suspension of fishing operations
50-63 (92-117)	Very high seas	Total suspension of fishing operations
\geq 64 (\geq 118)	Phenomenal	Total suspension of fishing operations



**SUBDIVISIONWISE WEATHER WARNING FOR DAY 1
(12-5-2023)**



- | | | |
|-----------------------------|------------------------|--------------------------|
| Subdivision Warning | Dust Storm | Subdivision color |
| ☁ Heavy Rain | 🌪 Strong Surface Winds | 🟢 NO WARNING |
| ❄ Heavy Snow | 🌡 Heat Wave | 🟡 WATCHER BE UPDATED |
| ⚡ Thunderstorms & Lightning | ❄ Cold wave | 🟠 ALERT (BE PREPARED) |
| ☁ Hailstone | 🌫 Fog | 🔴 WARNING (TAKE ACTION) |



**SUBDIVISIONWISE WEATHER WARNING FOR DAY 2
(13-5-2023)**



- | | | |
|-----------------------------|------------------------|--------------------------|
| Subdivision Warning | Dust Storm | Subdivision color |
| ☁ Heavy Rain | 🌪 Strong Surface Winds | 🟢 NO WARNING |
| ❄ Heavy Snow | 🌡 Heat Wave | 🟡 WATCHER BE UPDATED |
| ⚡ Thunderstorms & Lightning | ❄ Cold wave | 🟠 ALERT (BE PREPARED) |
| ☁ Hailstone | 🌫 Fog | 🔴 WARNING (TAKE ACTION) |



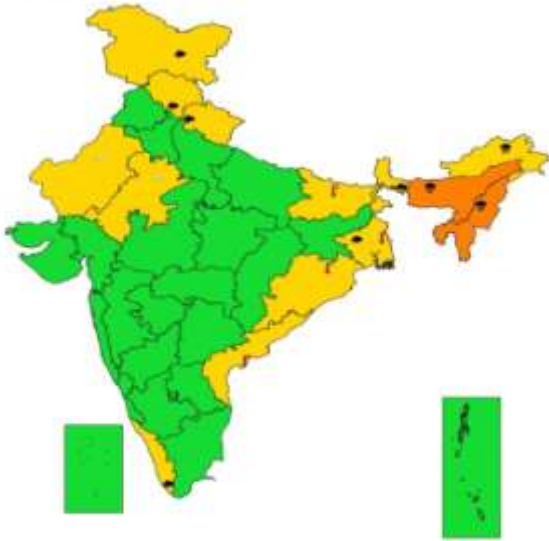
**SUBDIVISIONWISE WEATHER WARNING FOR DAY 3
(14-5-2023)**



- | | | |
|-----------------------------|------------------------|--------------------------|
| Subdivision Warning | Dust Storm | Subdivision color |
| ☁ Heavy Rain | 🌪 Strong Surface Winds | 🟢 NO WARNING |
| ❄ Heavy Snow | 🌡 Heat Wave | 🟡 WATCHER BE UPDATED |
| ⚡ Thunderstorms & Lightning | ❄ Cold wave | 🟠 ALERT (BE PREPARED) |
| ☁ Hailstone | 🌫 Fog | 🔴 WARNING (TAKE ACTION) |



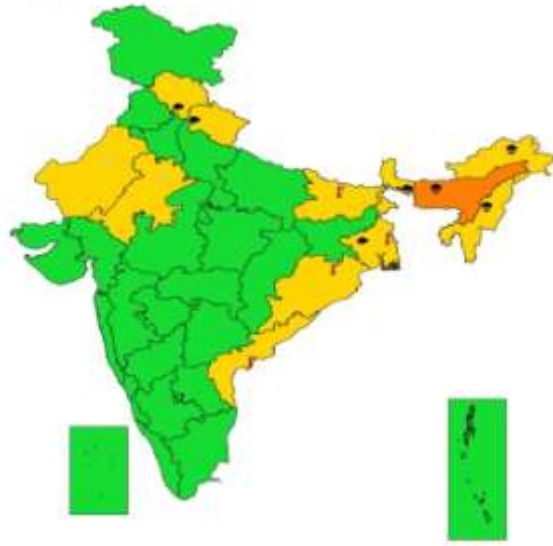
SUBDIVISIONWISE WEATHER WARNING FOR DAY 4 (15-5-2023)



- | | | |
|-----------------------------|------------------------|--------------------------|
| Subdivision Warning | Dust Storm | Subdivision color |
| ☁ Heavy Rain | 🌪 Strong Surface Winds | 🟢 NO WARNING |
| ☁ Heavy Snow | 🔥 Heat Wave | 🟡 WATCH(BE UPDATED) |
| ⚡ Thunderstorms & Lightning | ❄ Cold wave | 🟠 ALERT (BE PREPARED) |
| 🌫 Haze/fog | 🌫 Fog | 🔴 WARNING (TAKE ACTION) |



SUBDIVISIONWISE WEATHER WARNING FOR DAY 5 (16-5-2023)



- | | | |
|-----------------------------|------------------------|--------------------------|
| Subdivision Warning | Dust Storm | Subdivision color |
| ☁ Heavy Rain | 🌪 Strong Surface Winds | 🟢 NO WARNING |
| ☁ Heavy Snow | 🔥 Heat Wave | 🟡 WATCH(BE UPDATED) |
| ⚡ Thunderstorms & Lightning | ❄ Cold wave | 🟠 ALERT (BE PREPARED) |
| 🌫 Haze/fog | 🌫 Fog | 🔴 WARNING (TAKE ACTION) |

Fishermen warning graphics

